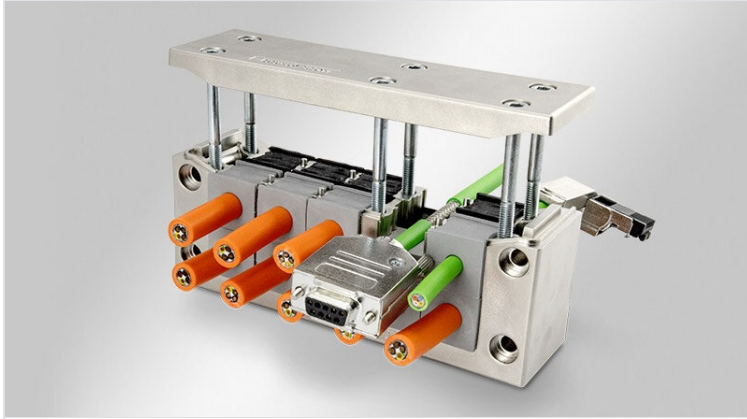


# EMC-KEL-DS | Split EMC cable entry frames

for shielding cables with connectors / IP55



IP54

IP55

RIWA



RoHS compliant



Made in Germany

The EMC cable entry frame EMC-KEL-DS has been metallised (galvanise coated) to create a conductive surface.

The front cable grommet (KT) is used for strain relief and cable sealing on the cable jacket. The cable shield is contacted over 360° via the rear conductive grommet (EMC-KT).

The EMC-KEL-DS frames match exactly the cut-out dimensions for 24-pin standard industrial connectors. Either a cut-out of 36 mm or 46 mm in height can be chosen depending on the cables being routed.

The contact between the EMC-KEL-DS and the conductive housing wall is realised via the included conductive flat gasket.

It is also possible to integrate threaded bushings. Please ask us about your desired variant. The version with threaded bushings enables the cable entry frame to be screwed onto the housing from the inside out. This protects against vandalism and tampering with the housing from the outside.

## Specifications

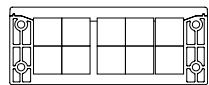
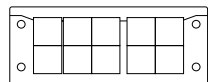
IP rating (EN 60529)	IP54, IP55
Material	Polyamide, highly conductive coating
Flame class	UL94-HB
Operating temperature	-40 C° to 140 C°
Mounting options	Screw type mounting

## Advantages & Benefits

- Both conducted and field-bound disturbances can be reliably diverted
- Strain relief and sealing are separated from the EMC contact
- Scratch-resistant surface
- Contacting the cable shield over 360°
- EMC grommets made entirely from conductive elastomer
- Very good dissipation values
- Very good shielding effect with regard to EMC tightness

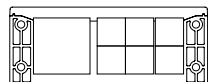
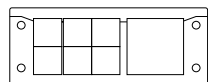
## Product types & Sizes

### EMC-KEL-DS 24|10

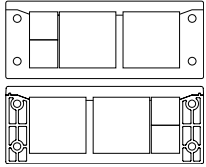


Part No.	<b>99410</b>	Height	<b>40 mm</b>
EAN	<b>4251269322679</b>	Mounting height	<b>40 mm</b>
Package quantity	<b>1</b>	Cut-out size	<b>112 x 36 mm</b>
For max. no. of cables	<b>10</b>	No. of screw holes	<b>4</b>
Max. cable diameter	<b>17 mm</b>	Diam. of screw holes	<b>5,8 mm</b>
Length	<b>147 mm</b>	Screw material	<b>Stainless steel (V2A)</b>
Width	<b>58 mm</b>	Suitable for grommets	<b>10 x EMC-KT small 10 x KT small</b>

### EMC-KEL-DS 24|7



Part No.	<b>99411</b>	Height	<b>40 mm</b>
EAN	<b>4251269322686</b>	Mounting height	<b>40 mm</b>
Package quantity	<b>1</b>	Cut-out size	<b>112 x 36 mm</b>
For max. no. of cables	<b>7</b>	No. of screw holes	<b>4</b>
Max. cable diameter	<b>35 mm</b>	Diam. of screw holes	<b>5,8 mm</b>
Length	<b>147 mm</b>	Screw material	<b>Stainless steel (V2A)</b>
Width	<b>58 mm</b>	Suitable for grommets	<b>6 x EMC-KT small 1 x EMC-KT large</b>



Part No.	<b>99412</b>	Height	<b>40 mm</b>
EAN	<b>4251269322693</b>	Mounting height	<b>40 mm</b>
Package quantity	<b>1</b>	Cut-out size	<b>112 × 36 mm</b>
For max. no. of cables	<b>4</b>	No. of screw holes	<b>4</b>
Max. cable diameter	<b>35 mm</b>	Diam. of screw holes	<b>5,8 mm</b>
Length	<b>147 mm</b>	Screw material	<b>Stainless steel (V2A)</b>
Width	<b>58 mm</b>	Suitable for grommets	<b>2 x EMC-KT small 2 x EMC-KT large</b>